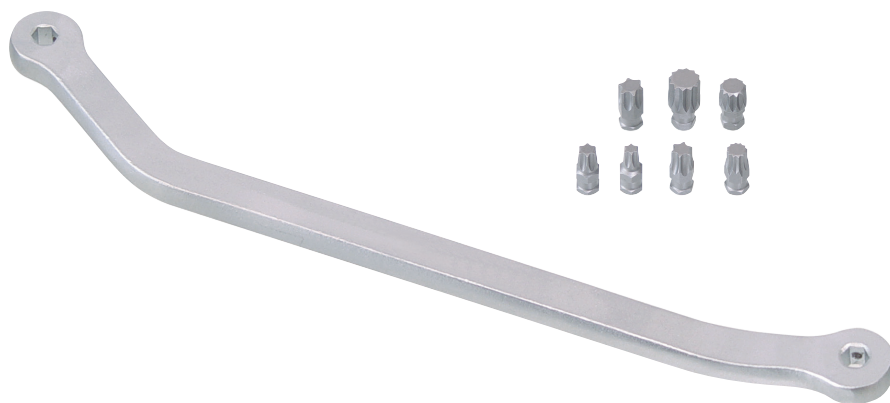




KL-0270-31 D

Bit Wrench, Angled, (Reinforced Design),
with 8 Bit Inserts



Product information
⚠ Read and understand before use!

EN



www.gedore-automotive.com



GEDORE Automotive GmbH

Breslauer Straße 41
78166 - Donaueschingen
Postfach 1329
78154 Donaueschingen - GERMANY

☎ +49 (0) 771 / 8 32 23-0
☎ +49 (0) 771 / 8 32 23-90
✉ info.gam@gedore.com
🌐 gedore-automotive.com

GEDORE TOOLS, INC.

Only for USA, Canada & Mexico / Sólo para EE.UU., Canadá y México
Seulement pour les USA, le Canada et le Mexique
7187 Bryhawke Circle, Suite 700
North Charleston, SC 29418, USA

☎ +1-843 / 225 50 15
☎ +1-843 / 225 50 20
✉ info@gedoretools.com
🌐 gedore.com

Version 10/2023

KL-0270-31D (EN231007).indd

Product description

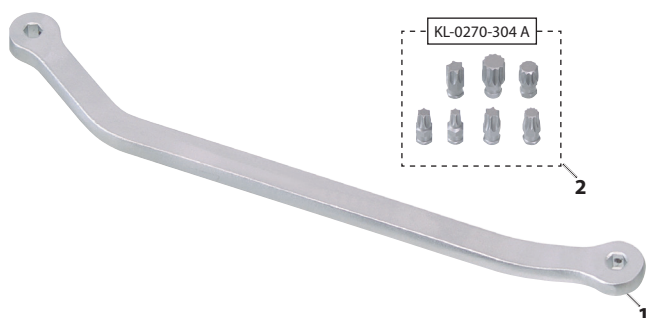
KL-0270-31 D - Bit wrench, angled, (reinforced design), with 8 bit inserts

Universal application.

Essential for Mercedes Toe Adjustment, e.g. on 190 Series (W201), C-Class (W202), C-Class (W203), 200 - 300 E (W124), E-Class (W210, W211), S-Class (W220). Also suitable for door hinge bolts e.g. Audi (97 - onwards); Renault Safrane / Laguna; Seat Arosa / Cordoba / Ibiza; VW Golf III / Golf IV / Passat (97 - onwards) / Polo / Vento; Škoda.

The KL-0270-31 C wrench is the ideal tool for setting the toe at the rear axle. Due to its special shape, this tool allows the user to easily and accurately turn the adjusting screw which is particularly hard to access.

DE



Scope of delivery/Component overview

Pos.	Part No.	Description	Qty
1	KL-0270-3100	Wrench (threaded pin included)	1
2	KL-0270-304 A	Bit-inserts Set 8 pcs. (Drive 5/16") T30, T40, T45, T50, XZN-M8, XZN-M10, XZN-M12	1
-	KL-4990-2001	Plastic storage box	1



Technical Data

Bit Insert:..... T30, T40, T45, T50, XZN-8, XZN-10, XZN-12

Bit Insert (height): 20mm

Bit Drive:..... 5/16"

Length: 320mm

Weight: 500g

SAFETY INSTRUCTIONS AND REGULATIONS

- Read and understand this product information **before using** the special tool, as it serves to familiarise you with the special tool and thus ensures **safe use**!
- Use the special tool **as intended** and **always** carry out maintenance and repair work in compliance with the regulations on occupational safety and accident prevention as well as the vehicle manufacturer's instructions!
- Before each use**, check the special tool **carefully** for damage, loose parts, or unauthorised modifications. **Never** use it if you notice any such deficiencies!
- Always** wear your personal protective equipment, e.g. safety goggles, protective gloves, safety shoes, if necessary!
- Interrupt your work **immediately** if you are unsure about using the special tool, and contact **GEDORE Automotive GmbH** if necessary!
- Dispose of the special tool and its packaging material in an environmentally compatible way in accordance with the legal requirements. If necessary, ask your local authorities or **GEDORE Automotive GmbH** about environmentally friendly disposal options!