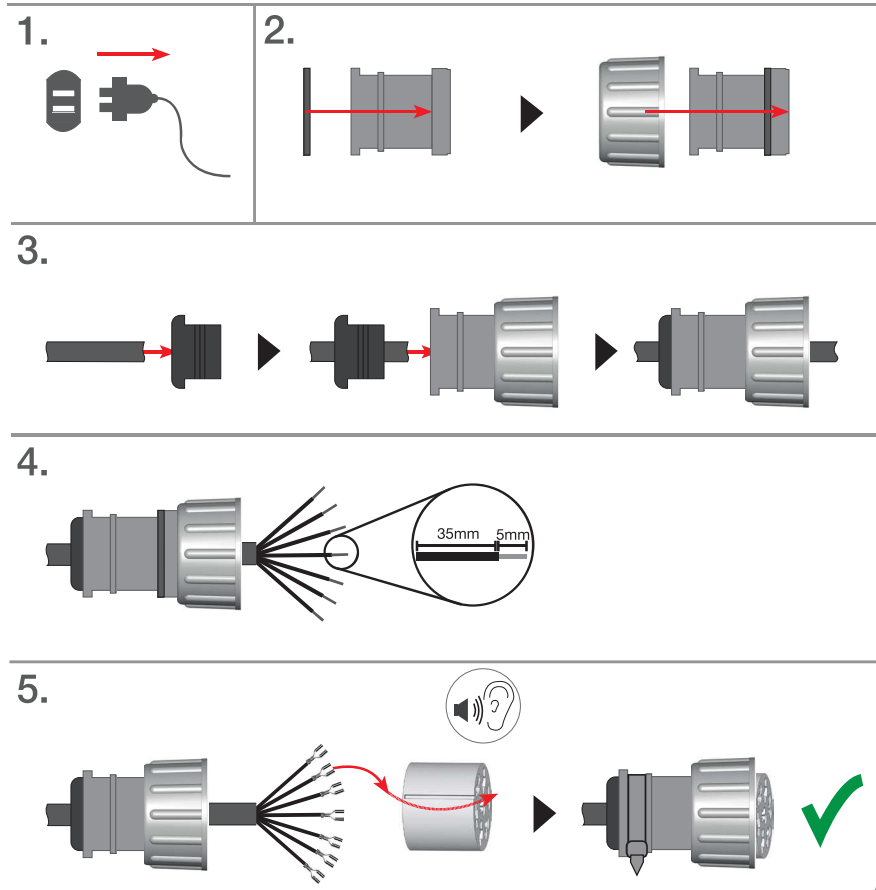
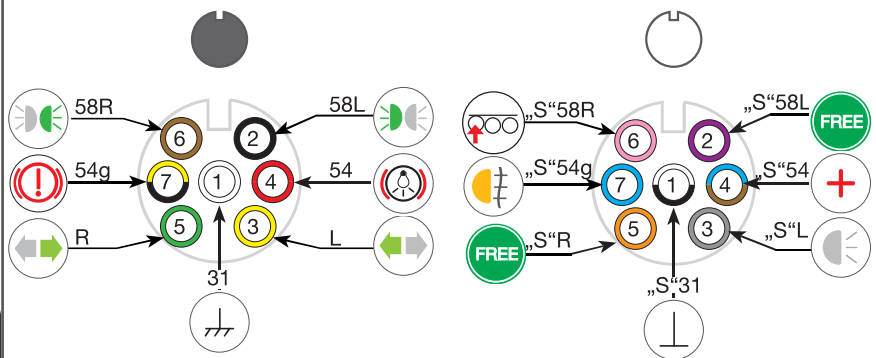
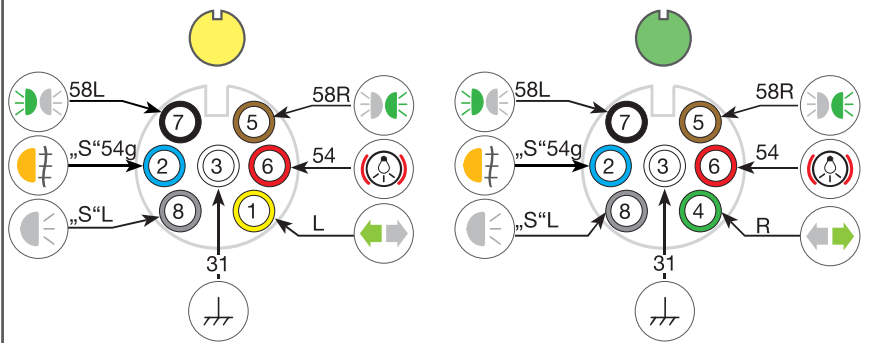
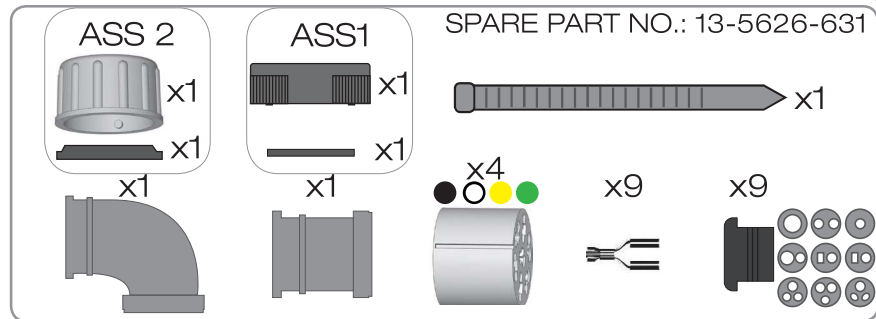


ASS1, ASS2, ASS2.1 7 pin female

Mounting instruction ASS1, ASS2 7 pin female

ASS1,
ASS2,
ASS2.1,
7 pin

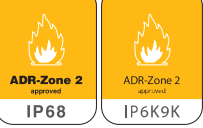
ASS1,
ASS2,
ASS2.1,
7 pin



Imax=25A

Imax=25A

ASS 1 ASS 2, 2.1

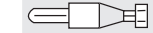


ASS1, ASS2, ASS2.1 7 pin male

ASS1,
ASS2,
ASS2.1,
7 pin



Imax=25A



ASS 1 ASS 2, 2.1



Mounting instruction ASS1, ASS2 7 pin male

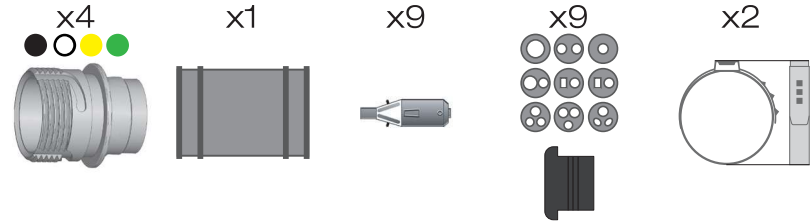
ASS1,
ASS2,
ASS2.1,
7 pin



Imax=25A



SPARE PART NO.: 13-5625-981



1. Insert the plug into the housing.
2. Slide the sleeve onto the plug.
3. Push the sleeve into the housing until it is fully seated.
4. Use a flashlight to inspect the plug pins, ensuring they are fully inserted and aligned. A 35mm diameter and 5mm depth are indicated.
5. Tighten the nuts onto the pins using a wrench. A warning icon indicates to avoid over-tightening.

